

Class-VI (CHAPTER-07) Getting to Know Plants

Questions

1. Correct the following statements and rewrite them in your notebook.
 - (a) Stem absorbs water and minerals from the soil.
 - (b) Leaves hold the plant upright.
 - (c) Roots conduct water to the leaves.
 - (d) The number of petals and sepals in a flower is always equal.
 - (e) If the sepals of a flower are joined together, its petals are also joined together.
 - (f) If the petals of a flower are joined together, then the pistil is joined to the petals.
 2. Draw
 - (a) Leaf
 - (b) A taproot
 - (c) A flower, you have studied for Table 7.3.
 3. Can you find a plant in your house or in your neighborhood, which has a long but a weak stem? Write its name. In which category would you classify it?
 4. What is the function of a stem in a plant?
 5. Which of the following leaves have reticulate venation?
Wheat, Tulsi, Maize, Grass, Coriander, China rose.
 6. If a plant has fibrous root, what types of venation do its leaves likely to have?
 7. If a plant has leaves with reticulate venation, the kind of roots will it have?
 8. Is it possible for you to recognize the leaves without seeing them? How ?
 9. Write the name of the parts of flower.
 10. Which of the following plants have you seen? Of those that you have seen, which ones have flowers?
Grass, Maize, Wheat, Chili, Tomato, Tulsi, Pipal, Shisham, Banana, Mango, Jamun, Guava, Pomegranate, Papaya, Banana, Lemon, sugarcane, Potato, Groundnut.
 11. Name the part of the plant which produces its food. Name this process.
 12. In which part of flower you likely to find the ovary?
 13. Name two flowers, each with joined and separated sepals.
-

NCERT Solutions

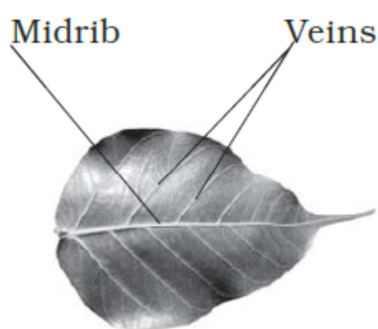
14. Name of plant parts are hidden in this grid. Search for them by going up, down, or even diagonally forward as well as backward. Have fun!

O	V	U	L	E	L	Y	T	S	T	E	M
V	E	I	N	W	Q	H	E	R	B	P	I
A	N	I	M	A	L	Z	E	X	R	N	D
R	F	I	L	A	M	E	N	T	M	U	R
Y	A	R	A	B	L	C	O	D	B	E	I
L	E	E	U	O	F	O	L	G	H	I	B
A	L	H	I	I	R	J	A	L	K	U	A
T	M	T	N	O	U	P	P	Q	R	R	R
E	E	N	S	T	I	F	E	H	V	W	N
P	Y	A	M	G	T	T	S	Z	Z	N	C
F	L	O	W	E	R	E	H	T	N	A	H
S	T	A	M	E	N	N	S	E	P	A	L

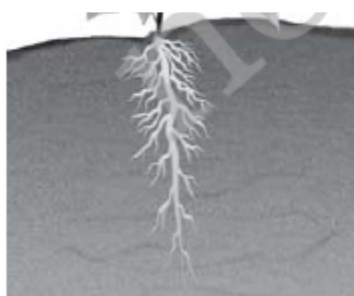
Class-VI (CHAPTER-07) Getting to Know Plants

Answers

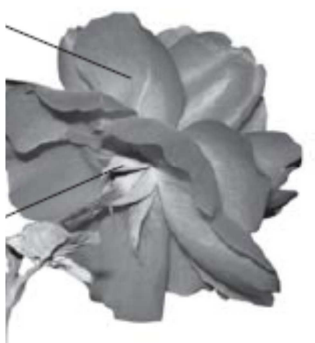
1. The correct statements are
 - (a) Roots absorb water and minerals from the soil.
 - (b) Stem holds the plant upright.
 - (c) Stem conducts water to the leaves.
 - (d) The number of petals and sepals in a flower may not be always equal.
 - (e) If the sepals of flower are joined together, its petals are separate and not joined together.
 - (f) If the petals of a flower are joined together, then the pistil is not necessarily joined to the petal.
2. Leaf



Tap root



Flower



3. Yes, Lauki (guard) plant. It needs support. It is a climber.
 4. Function of stem:
 - (i) Gives support to plant.
 - (ii) Conducts water and minerals from roots to leaves.
 - (iii) Conducts food from leaves to other parts of the plant.
 5. Tulsi, Coriander, China rose have reticulate venation.
 6. Parallel venation.
 7. Tap root.
 8. Yes, by taking an impression of the leaf. Put paper on the leaf. Hold the pencil tip sideways and rub it on the portion of paper having leaf below. You get impression of leaf with some lines on it. These lines help us to recognize the types of leaf.
 9. Parts of flower:
 - (i) Sepals
 - (ii) Petals
 - (iii) Stigma
 - (iv) Style
 - (v) Anther
 - (vi) Androecium
 - (vii) Gynoecium
 10. I have seen all these plants. Plants with flower are
 - Chili
 - Tomato
 - Tulsi
 - Mango
-

NCERT Solutions

Lemon

Jamun

Guava

Pomegranate

Papaya

Banana

11. Leaves of green plants produce food. The process is called photosynthesis.

12. It is the lowermost and swollen part of the pistil.

13. Joined sepals- Rose, Lotus

Separate sepals- China rose, mustard flower.

14.

O	V	U	L	E	L	Y	T	S	T	E	M
V	E	I	N	W	Q	H	E	R	B	P	I
A	N	I	M	A	L	Z	E	X	R	N	D
R	F	I	L	A	M	E	N	T	M	U	R
Y	A	R	A	B	L	C	O	D	B	E	I
L	E	E	U	O	F	O	L	G	H	I	B
A	L	H	I	I	R	J	A	L	K	U	A
T	M	T	N	O	U	P	P	Q	R	R	R
E	E	N	S	T	I	F	E	H	V	W	N
P	Y	A	M	G	T	T	S	Z	Z	N	C
F	L	O	W	E	R	E	H	T	N	A	H
S	T	A	M	E	N	N	S	E	P	A	L

Ovule

Petal

Filament

Herb

Flower

Ovary

Stamen

Petal

Sepal

Midrib

Fruit